



Centre Medical and Surgical Associates, P.C.

YOUR HEALTH CARE PROVIDER FOR LIFE

Centre Medical and Surgical Associates, P.C. • Department of Pediatrics
3901 South Atherton Street • State College, Pennsylvania 16801 • Telephone (814) 466-7921
141 Medical Park Lane • Bellefonte, Pennsylvania 16823 • Telephone (814) 355-3626
www.centremedsurg.com

Bites and Stings

ANIMAL BITES

1. Wash the wound thoroughly with plenty of soap and water.
2. Identify the animal and report it to local authorities
3. Call our office concerning further treatment and the need for Tetanus protection.

SPIDER BITES

1. After any spider bite, try to find and identify the spider.
2. Notify our office should your child develop severe abdominal pains and cramping following a spider bite
3. Notify our office if a spider bite is followed by intense localized pain, swelling, or redness.

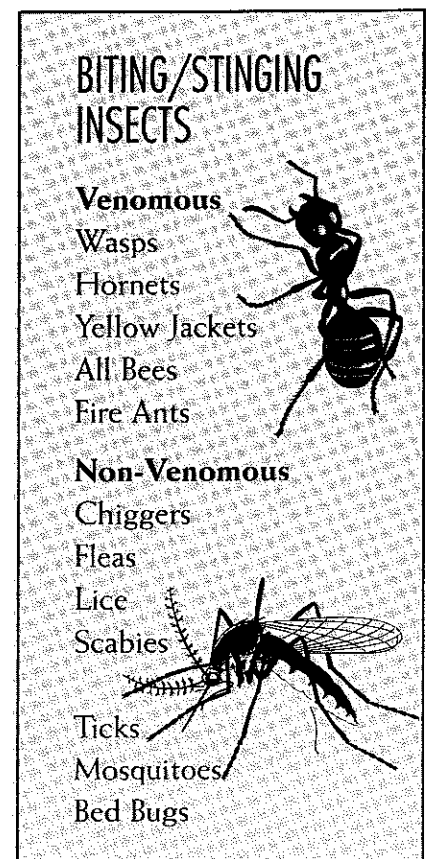
INSECT BITES AND STINGS

There are dozens of insects whose bites and stings cause problems. Therefore, we will simply categorize them into two areas: venomous and non-venomous.

It is not possible for you to tell whether your baby is allergic to insect venom until he or she has been bitten or stung. Reactions to insect venom can range from slightly mild to very severe. Keep your baby's fingernails short to reduce their ability to scratch. Scratching stings or bites can cause infection.

REACTIONS TO STINGS

1. Most reactions from stinging insects are caused by the venom of Hymenoptera, which include bees, wasps, hornets, yellow jackets and fire ants. The overwhelming majority of these reactions are not life threatening
2. There are two general types of reactions to stinging insects:
 - (a) A **"local reaction"** is the expected reaction. This consists of pain, redness and subsequent itching. Moderate local swelling up to 12 inches around the sting site may occur



continued on back

Bites and Stings

continued

To treat a local reaction, apply cold compresses and ice to the affected area. If an extremity is involved and swelling is extensive, elevation of the area about the level of the heart and rest are helpful precautions. Ibuprofen or Tylenol may be used to decrease pain and swelling. Administration of an antihistamine such as Benadryl or Atarax may also decrease itching.

Most local reactions do not require a physician's care unless the site becomes infected. Many people are worried about infection when they see the redness and swelling from a sting, but this reaction is normal immediately after a sting and up to a few days later.

Infection is uncommon and almost never occurs earlier than 24 hours after the sting. After 24 hours, if there is pus or the redness/swelling is worse, call the doctor.

- (b) A **general systemic reaction** or "anaphylactic" reaction can rarely occur. Mild symptoms may include itching of the eyes, flushed skin, or the appearance of hives. More severe symptoms could include abdominal pain, nausea and vomiting, a constricted feeling in the throat and chest, or wheezing.

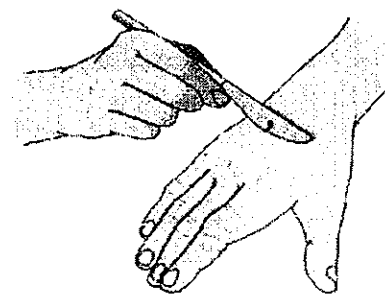
A severe reaction may involve convulsion and shock. Signs of shock include falling blood pressure, blueness, and unconsciousness. Notify our office immediately if any of these generalized symptoms occur.

CALL FOR HELP IMMEDIATELY IF YOU NOTICE ANY OF THE FOLLOWING:

- hives
- lightheadedness
- shortness of breath
- listlessness, grogginess
- extreme swelling of eyes, lips or genitals
- wheezing
- fainting
- difficulty swallowing
- unconsciousness

STINGER REMOVAL

Place the edge of a dull table knife (or credit card) firmly against the skin next to the embedded stinger. Applying constant firm pressure, scrape the knife across your skin surface and the stinger. This removes the stinger without injecting more venom, which is what happens when you remove the stinger with tweezers or your fingers.



TREATMENT OF STINGS

Apply ice to the affected area to soothe stinging and reduce inflammation. To ease discomfort, you may administer Ibuprofen (for the pain) and Benadryl or Topical Cortaid (for the itching and swelling).